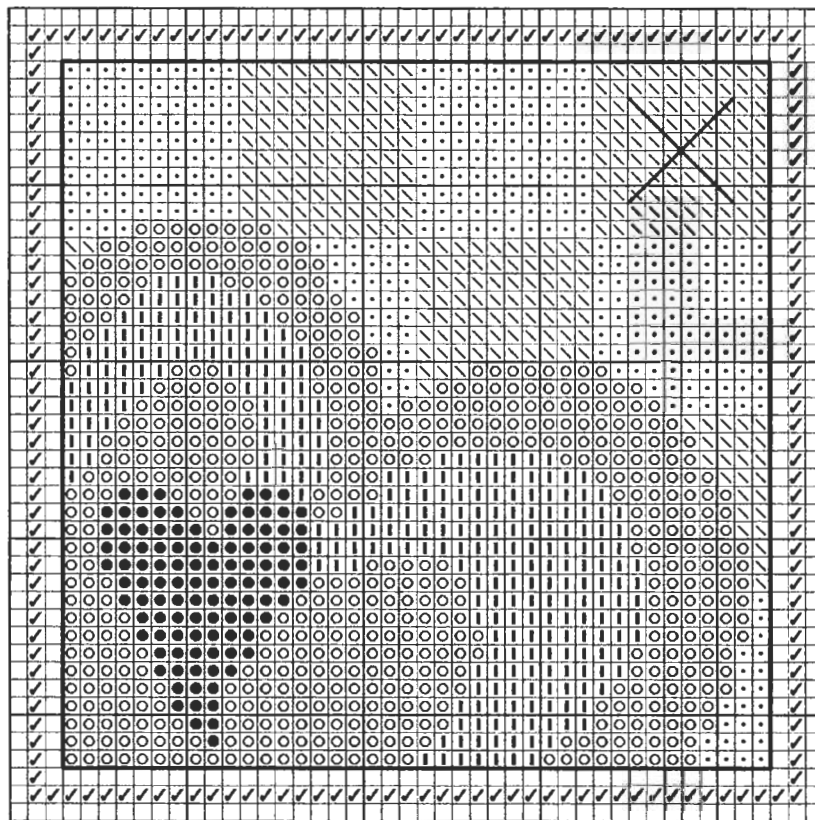


2005 Cross Stitcher's Surprise Series from *Rainbow Gallery*

FEBRUARY - HEARTS

Stitch count: 44h x 44w – approx. 3”h x 3”w ♡ 28ct Wheaten Country French linen from Wichelt (#86-267) stitched over two or 14ct Wheaten Country French Soft Touch Aida (#367-267)



Rainbow Gallery Fibers - 1 card each

- ✓ CR04 Crystal Braid Pink Pearl – 1 strand
- E851 Elegance™ Brown – 1 strand
- E853 Elegance™ Dark Brown – 1 strand
- FT1 Soft Sheen Fyre Werks Mocha® – 1 strand
- S1045 Splendor® Lite Ant Rose – 2 ply
- ∖ S1067 Splendor® Dk Raspberry – 2 ply

Be sure to make only ½ cross stitches of the Pink Crystal Braid for the outer border – otherwise your stitching will become too tight. After completing all cross stitches, back stitch with 1 strand Dark Brown Elegance™ around the edge of the main design area as indicated by the solid line on the chart. Attach cupid charm at the large 'X' with Dark Raspberry Splendor®. (charm #15143AG from By Jupiter!)

Go to www.ericamichaels.com for

ERICA MICHAELS
DESIGNS FOR COUNTED CROSS STITCH

more designs by Linda Stolz

See many more of our designs and
learn more about our products at
www.rainbowgallery.com

Model framed by *Homespun Corner, Clarksville TN with Wood 'N Needle Crafts #FF ru LL (Raw Umber)*

Come back for next month's design!